



ENIB Co., Ltd.

# PFA WELD FITTING (용착피팅)

TUBE WELD TYPE

## OVERVIEW

PIPE FITTING에 사용되는 면대 면의 맞대기 용착 방식(Butt Welding)을 TUBE에 적용한 제품으로, 기존 TUBE FITTING 체결방식인 FLARE TYPE, FERRULE TYPE의 단점을 보완할 수 있다.

The welded tube fittings are constructed from butt-welding the inch tubes together, similar to pipe fittings. The design adds additional value compared to flare and ferrule-type fittings.

## FEATURES

1. 용착 부위가 협소하므로, 공간 절약 및 좁은 공간에 간결한 배관 구성.
2. 너트 풀림이 없으므로 누액(Leak) 및 누수로부터 안전.
3. 확관피팅과 튜브 없이 체결가능(Saver 방식, 해당 확관피팅용 Nut 필요)

1. Due to the reduced fusion width, additional space can be generated for precise weld configuration within a small space.
2. No nuts to be loosened, preventing potential leakage.
3. Connection possible without flaring tubes and fittings (Saver method requires a nut for flaring)

## TECHNICAL DATA

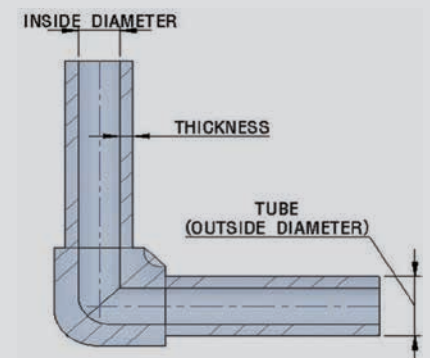
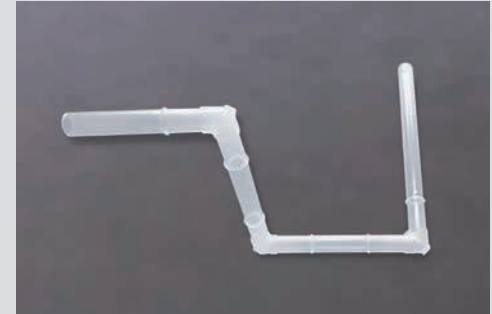
단위 : Mpa

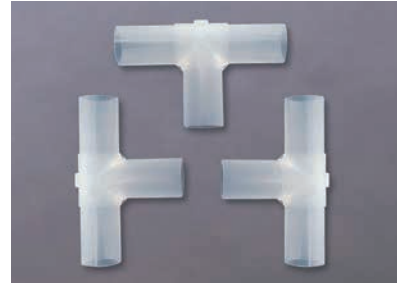
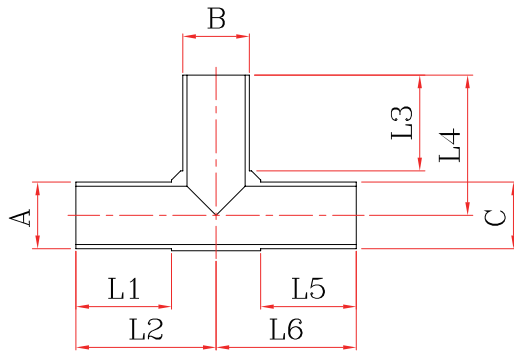
Tube Size	0°C	200°C	최고사용압력
1/4"	1.5	0.72	<ul style="list-style-type: none"> <li>▶ 적용튜브 : 1/4" ~ 1-1/2"</li> <li>▶ 사용온도 : -5°C ~ 200°C</li> <li>▶ 사용압력 : 좌측 도표 참조</li> <li>▶ 재 질 : 반도체 Grade PFA 사용 (Daikin AP-211SH)</li> </ul>
3/8"	1.3	0.63	
1/2"	1.0	0.50	
3/4"	0.7	0.32	
1"	0.6	0.25	
1-1/4"	0.5	0.10	
1-1/2"	0.5	0.10	

## Tube Connection Dimensions

단위 : mm

Tube Size	Outside Diameter	Inside Diameter	Thickness
1/4"	6.35	3.95	1.2
3/8"	9.53	6.33	1.6
1/2"	12.70	9.50	1.6
3/4"	19.05	15.85	1.6
1"	25.40	22.20	1.6
1-1/4"	31.80	28.20	1.8
1-1/2"	38.10	33.73	2.18





## WELD TEE

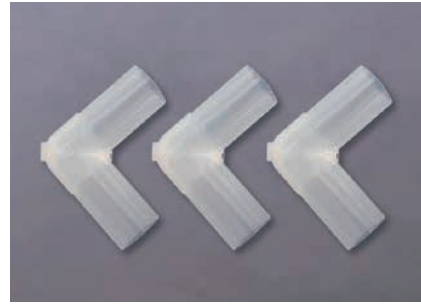
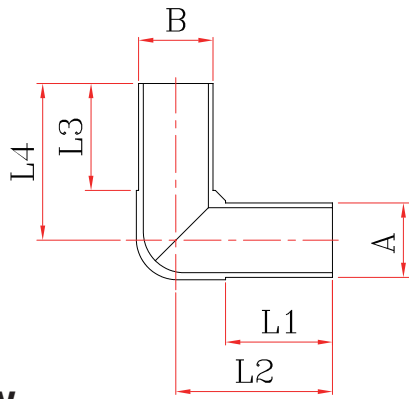
단위 : mm

PART No.	TUBE			LENGTH					
	A	B	C	L1	L2	L3	L4	L5	L6
WF-WT-04	1/4"	1/4"	1/4"	20.0	26.0	20.0	26.0	20.0	26.0
WF-WT-06	3/8"	3/8"	3/8"	29.5	36.5	29.5	36.5	29.5	36.5
WF-WT-08	1/2"	1/2"	1/2"	29.5	39.5	29.5	39.5	29.5	39.5
WF-WT-12	3/4"	3/4"	3/4"	34.5	49.5	34.5	49.5	34.5	49.5
WF-WT-16	1"	1"	1"	36.5	53.5	36.5	53.5	36.5	53.5
WF-WT-20	1-1/4"	1-1/4"	1-1/4"	54.5	74.5	54.5	74.5	54.5	74.5
WF-WT-24	1-1/2"	1-1/2"	1-1/2"	64.0	92.0	64.0	92.0	64.0	92.0

## WELD RED TEE

단위 : mm

PART No.	TUBE			LENGTH					
	A	B	C	L1	L2	L3	L4	L5	L6
WF-WRT-060406	3/8"	1/4"	3/8"	29.5	36.5	29.5	36.5	29.5	36.5
WF-WRT-080408	1/2"	1/4"	1/2"	29.5	39.5	20.0	30.5	29.5	39.5
WF-WRT-080608	1/2"	3/8"	1/2"	29.5	39.5	29.5	39.5	29.5	39.5
WF-WRT-120412	3/4"	1/4"	3/4"	34.5	49.5	20.0	35.0	34.5	49.5
WF-WRT-120612	3/4"	3/8"	3/4"	34.5	49.5	34.5	49.0	34.5	49.5
WF-WRT-120812	3/4"	1/2"	3/4"	34.5	49.5	24.5	39.5	34.5	49.5
WF-WRT-160416	1"	1/4"	1"	36.5	53.5	20.5	37.5	36.5	53.5
WF-WRT-160616	1"	3/8"	1"	37.0	54.0	30.0	47.0	37.0	54.0
WF-WRT-160816	1"	1/2"	1"	36.5	53.5	24.5	41.5	36.5	53.5
WF-WRT-161216	1"	3/4"	1"	36.5	53.5	29.5	46.5	36.5	53.5
WF-WRT-201220	1-1/4"	3/4"	1-1/4"	54.5	74.5	35.5	55.5	54.5	74.5
WF-WRT-201620	1-1/4"	1"	1-1/4"	55.0	75.5	37.0	58.0	55.0	75.5
WF-WRT-241224	1-1/2"	3/4"	1-1/2"	64.0	92.0	45.0	72.5	64.0	92.0
WF-WRT-241624	1-1/2"	1"	1-1/2"	64.0	92.0	37.0	65.0	64.0	92.0
WF-WRT-242024	1-1/2"	1-1/4"	1-1/2"	64.0	92.0	54.5	82.0	64.0	92.0



## WELD ELBOW

단위 : mm

PART No.	TUBE		LENGTH			
	A	B	L1	L2	L3	L4
WF-WE-04	1/4"	1/4"	20.0	26.0	20.0	26.0
WF-WE-06	3/8"	3/8"	29.5	36.5	29.5	36.5
WF-WE-08	1/2"	1/2"	29.5	39.5	29.5	39.5
WF-WE-12	3/4"	3/4"	29.5	44.5	29.5	44.5
WF-WE-16	1"	1"	36.5	53.5	36.5	53.5
WF-WE-20	1-1/4"	1-1/4"	54.5	74.5	54.5	74.5
WF-WE-24	1-1/2"	1-1/2"	64.0	92.0	64.0	92.0

## WELD RED ELBOW

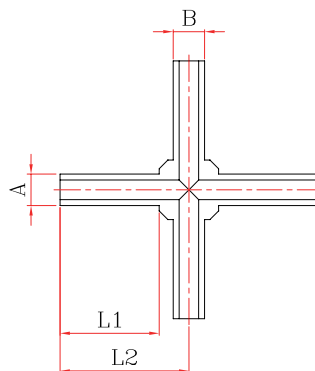
단위 : mm

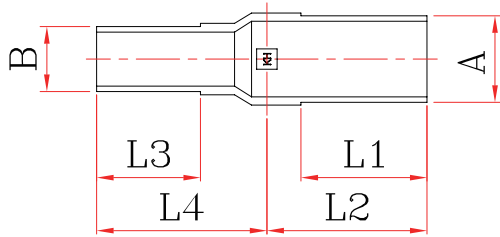
PART No.	TUBE		LENGTH			
	A	B	L1	L2	L3	L4
WF-WRE-0604	3/8"	1/4"	30.0	37.0	20.5	27.5
WF-WRE-0804	1/2"	1/4"	29.5	39.5	20.0	29.5
WF-WRE-0806	1/2"	3/8"	29.5	39.5	29.5	39.5
WF-WRE-1204	3/4"	1/4"	29.5	44.5	20.5	35.5
WF-WRE-1208	3/4"	1/2"	29.0	44.0	24.5	39.0
WF-WRE-1604	1"	1/4"	37.0	52.5	21.0	38.0
WF-WRE-1606	1"	3/8"	37.0	52.5	30.5	48.0
WF-WRE-1608	1"	1/2"	36.5	53.5	23.0	39.0
WF-WRE-1612	1"	3/4"	36.0	53.0	29.5	46.5
WF-WRE-2412	1-1/2"	3/4"	64.0	92.0	37.0	64.5
WF-WRE-2416	1-1/2"	1"	64.0	92.0	45.0	73.0
WF-WRE-2420	1-1/2"	1-1/4"	64.0	92.0	54.5	82.5

## WELD CROSS TEE

단위 : mm

PART No.	TUBE		LENGTH	
	A	B	L1	L2
WF-WCT-0404	1/4"	1/4"	20.0	26.0





## WELD REDUCER

단위 : mm

PART No.	TUBE		LENGTH			
	A	B	L1	L2	L3	L4
WF-WR-0604	3/8"	1/4"	24.5	34.0	20.0	41.0
WF-WR-0804	1/2"	1/4"	24.5	34.0	20.0	41.0
WF-WR-0806	1/2"	3/8"	24.5	34.0	24.5	44.5
WF-WR-1204	3/4"	1/4"	30.5	39.5	20.0	36.0
WF-WR-1206	3/4"	3/8"	30.5	39.5	24.5	39.0
WF-WR-1208	3/4"	1/2"	30.5	40.0	24.5	44.5
WF-WR-1604	1"	1/4"	37.0	46.0	20.0	39.0
WF-WR-1606	1"	3/8"	37.0	46.0	24.5	42.0
WF-WR-1608	1"	1/2"	37.0	47.0	24.5	44.5
WF-WR-1612	1"	3/4"	37.0	47.0	30.5	50.0
WF-WR-2012	1-1/4"	3/4"	54.5	71.0	30.5	53.5
WF-WR-2016	1-1/4"	1"	54.5	71.0	44.5	64.5
WF-WR-2412	1-1/2"	3/4"	64.0	80.5	30.5	57.0
WF-WR-2416	1-1/2"	1"	64.0	80.5	44.5	68.5
WF-WR-2420	1-1/2"	1-1/4"	64.0	80.5	54.5	74.5

## HOW TO ORDER

Product Name	CODE	Code_Shape	CODE	Product Name	CODE
PFA WELD FITTING	WF	WELD TEE	WT	1/4"	04
		WELD RED TEE	WRT	3/8"	06
		WELD REDUCER	WR	1/2"	08
		WELD ELBOW	WE	3/4"	12
		WELD RED ELBOW	WRE	1"	16
		WELD CROSS TEE	WCT	1-1/4"	20
					1-1/2"
<b>Example : WF - WRT - 060406</b>					
<b>WF</b>	<b>WELD FITTING</b>				
<b>WRT</b>	<b>WELD RED TEE</b>				
<b>060406</b>	<b>3/8"X1/4"X3/8"</b>				

## “ SMART VALUE OPERATION PRODUCT LINE UP ”

### ENIB (Extrusion & Injection, Basic Co., Ltd) Corporate Mission :

ENIB is to become a key provider of safe, high performance, and advanced technology device and components for fluid management systems and applications that meet or exceed the needs and requirements of global customers.

62, BANSAN 2-RO, MUNMAK-EUP, WONJU-SI,  
GANGWON-DO, REPUBLIC OF KOREA  
Customer Service Tel : +82 033-743-9200  
Customer Fax : +82 033-743-9201  
www.enib.co.kr